

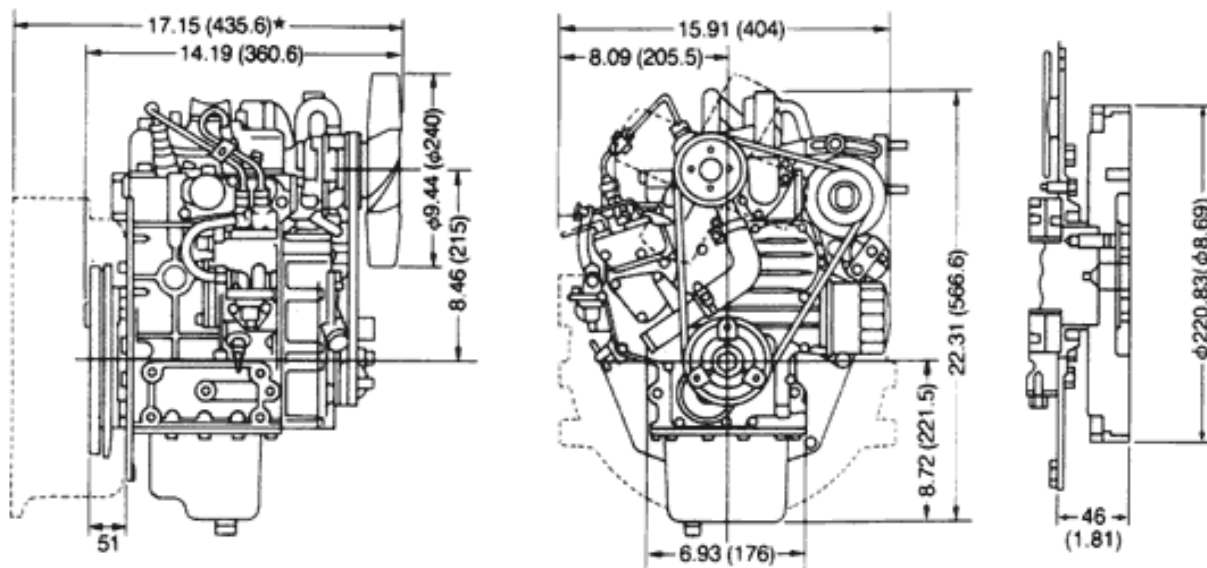
Kubota® ENGINE AMERICA

////// **America's Power Source**

Kubota Super Mini Series



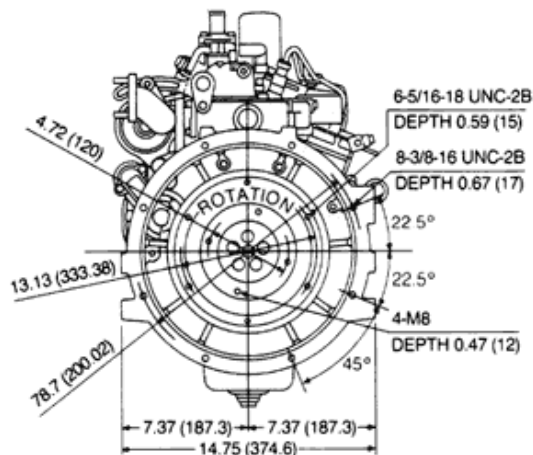
Two and three cylinder engines from 0.48 to 0.75 liter displacement in diesel, gasoline, LP (liquid propane) and dual-fuel versions. D722-E and WG750-E/DF750-E engines have same outline to simplify design for multiple fuel applications.



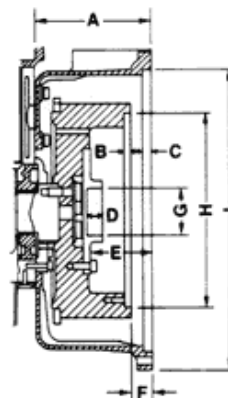
★ : with SAE Flywheel and Housing

SAE Flywheel and Housing: inch (mm)

SAE NO.5 Housing



CLUTCH NO.6 1/2 Flywheel



A	5.08 (129)	G	$\phi 2.05^{+0.0018}_0$ ($\phi 52H7^{+0.003}_0$)
B	0.28 (7.2)	H	$\phi 8.50^{+0.00283}_0$ ($\phi 215.9H8^{+0.072}_0$)
C	0.39 (10)	I	$\phi 12.37^{+0.00319}_0$ ($\phi 314.32H8^{+0.081}_0$)
D	0.69 (17.5)		
E	2.81 (71.4)		
F	0.91 (23)		