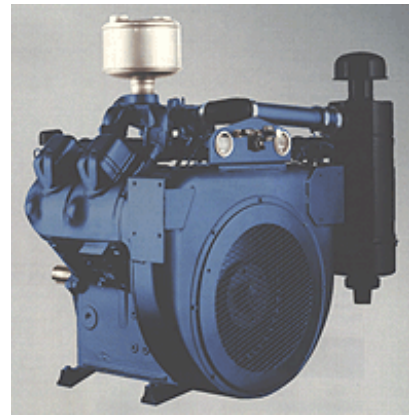


WISCONSIN Series Engines

Your Heavy Duty Source of Power.

V465D



Standard Features

- Gasoline
- 65.9 HP
- Dual Fuel, LPG, NG Options
- 4 Cylinder
- Air Cooled
- V-block configuration
- Forged-Steel Crankshaft with tapered roller main bearings
- Heavy-duty cast-iron block
- Cast iron cylinders
- Centrifugal fly weight type governor
- Aluminum alloy pistons
- Dry type air cleaner with pre-cleaner
- Heat resistant alloy steel exhaust valves
- Electric starter with 65 amp belt-driven alternator or 30 amp flywheel alternator
- Instrument panel
- Exhaust valve rotators
- Solid state ignition with side mounted or top mounted distributor
- Hi temperature safety switch