

TMD27

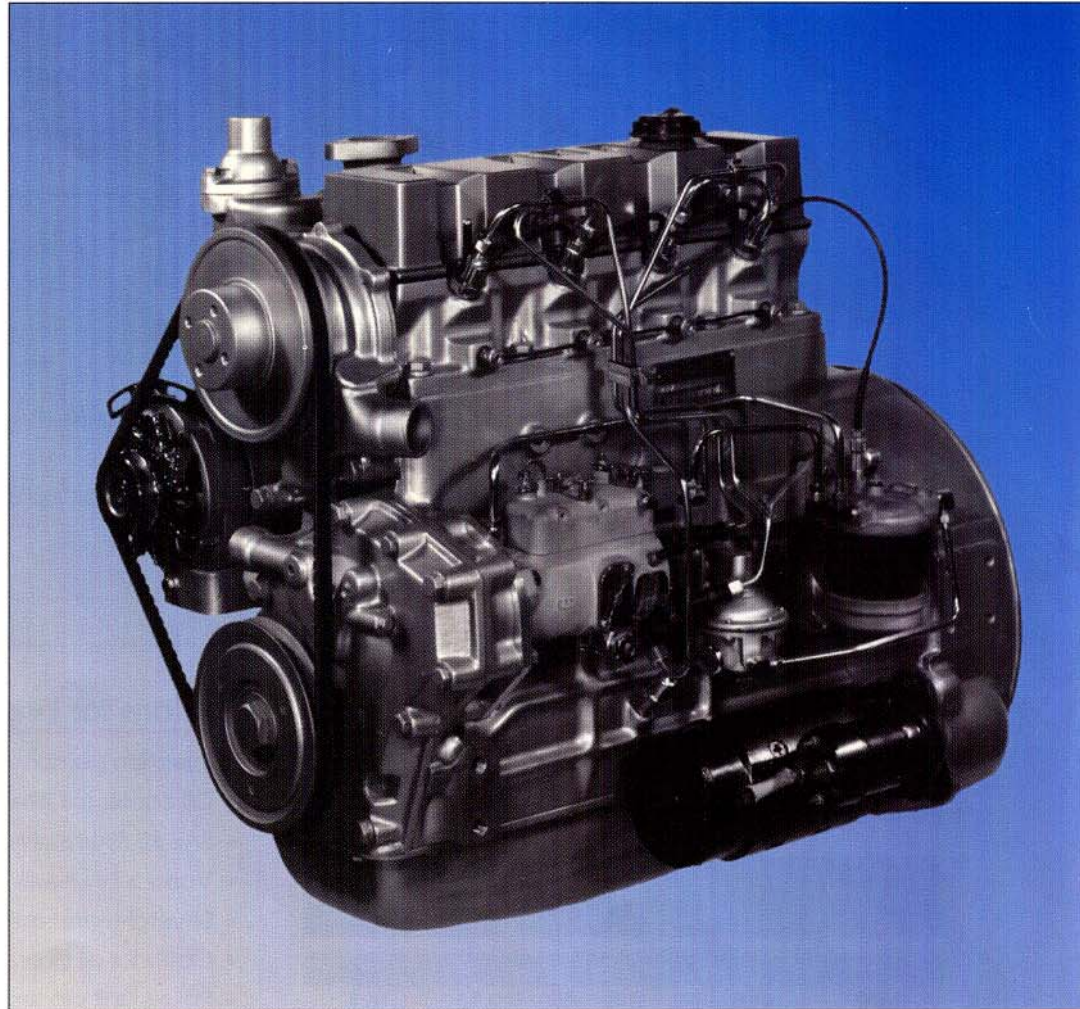
CONTINENTAL

66.5 HP Diesel

■ Jet Fuel Configurations

Standard Features

- 4-Cylinder
- Liquid cooled, OHV
- Five main bearings
- Heavy-duty cast iron cylinder block and crankcase
- Identical mounting points for gas and diesel models
- 70% parts interchangeability between all TM models
- High volume water pump
- 63 amp. alternator with internal regulator
- SAE #4 flywheel housing
- High volume oil pump
- Full-flow oil filter
- Injection pump with integral governor
- 'Ricardo' I.D.I. combustion system for reduced noise and low exhaust emissions



Your Heavy-Duty Source of Power

Setting industry standards since the turn of the century, Continental offers you liquid-cooled gasoline engines with diesel companions. Three-cylinder and four-cylinder models allow you to choose power ranging from 47.1 to 72 hp.

CONTINENTAL CONSTRUCTION

Continental engines are designed for worldwide acceptance, and are the first metric industrial engines produced in the United States. These heavy-duty sources of power offer outstanding

reliability and durability for a wide variety of industrial applications.

WORLDWIDE PARTS AND SERVICE

We back our engines with a worldwide service network. Experienced Continental representatives are always ready to meet your needs.

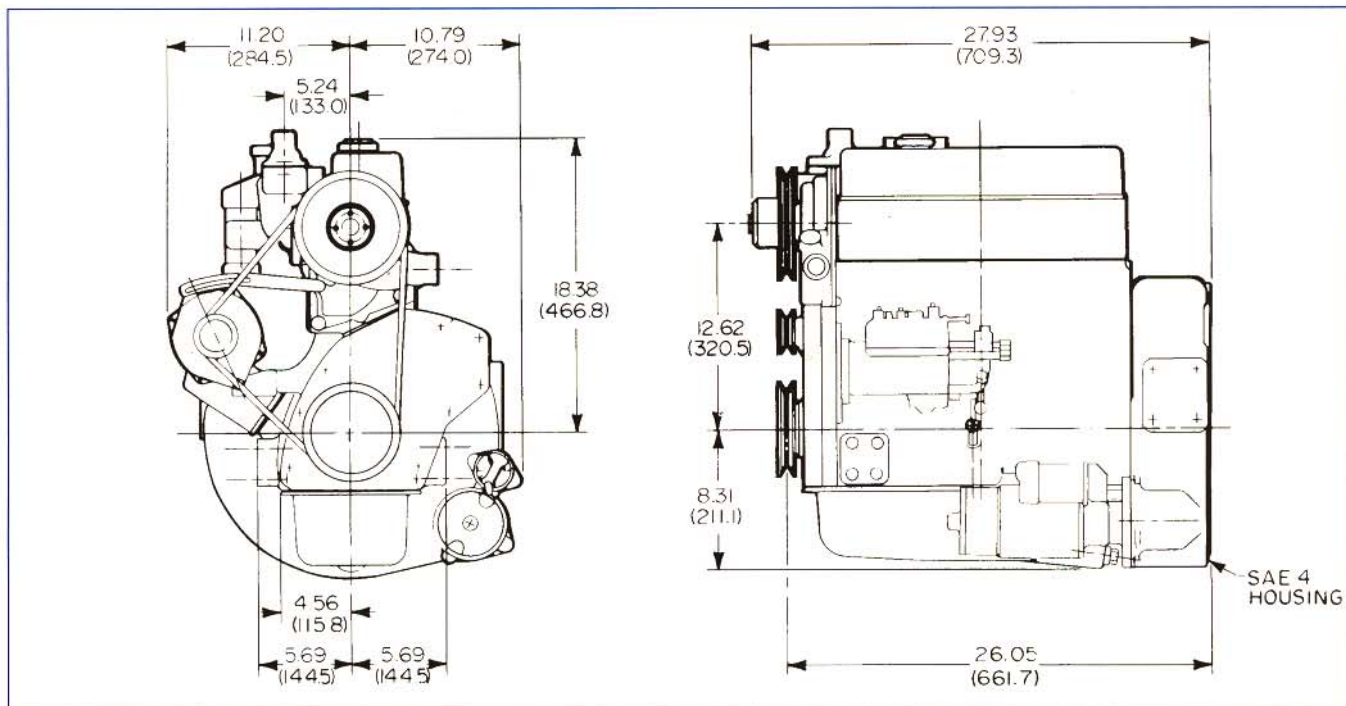
 **WIS-CON**
TOTAL POWER CORP.

TMD27

CONTINENTAL

66.5 HP Diesel

■ Jet Fuel Configurations



Net Weight – Dry Standard Engine (with Accessories): 535 lbs. (242.6 kg)

Bore.....3.58 in. (91 mm)
Stroke.....4.06 in. (103.2 mm)
Piston Displacement164.7 cu. in. (2.7 L)

RPM	HP	Kw	TORQUE	
			Ft. Lbs	Kg-m
1500	34.3	25.6	120.1	16.6
1800	41.9	31.2	122.3	16.9
2000	47.3	35.3	124.2	17.2
2400	55.5	41.4	121.5	16.8
2600	59.5	44.4	120.2	16.6
2800	63.3	47.2	118.7	16.4
3000	66.5	49.6	116.4	16.1

NOTE: Ratings shown are for diesel only

Power Output

Maximum dynamometer gross brake horsepower of the basic engine corrected to a pressure reading of 29.3 in. Hg (99 KPA) dry barometer and temperature of 77° F (25° C) when tested in accordance with SAE Test Code J1995 (June 90). Engine output can be demonstrated within 5% at the factory under standard rating conditions. Power will decrease 3% for each 1,000 ft. (305M) above 500 feet and 1% for each 10° F above standard temperature of 77° F (25 C). For continuous operation, applications should be limited to 85% of power shown.

Options for Every Need

- Injection pump with close regulation governor
- Oil cooler (oil filter base mounted)
- SAE #3 flywheel housing
- Various flywheels
- Several water outlet elbows
- Optional oil pan drains and pan configurations
- Power unit accessories

For more information on Continental Engines, please call or write:

WIS-CON TOTAL POWER CORP.

HEADQUARTERS:
 3409 Democrat Road
 P.O. Box 181160
 Memphis, Tennessee 38181
 Phone: (901) 365-3600
 TOLL FREE: 1-800-932-2858
 TELEX: 462-1058 (ITT)
 FAX NO: (901) 369-4050

EUROPEAN:
 Rue Joseph Deflandre, 13
 B-4920 Chaudfontaine (Liege)
 Belgium
 Phone: (32) (41) 675320
 TELEX: 42631 TDY TP B
 FAX NO: (32) (41) 677987